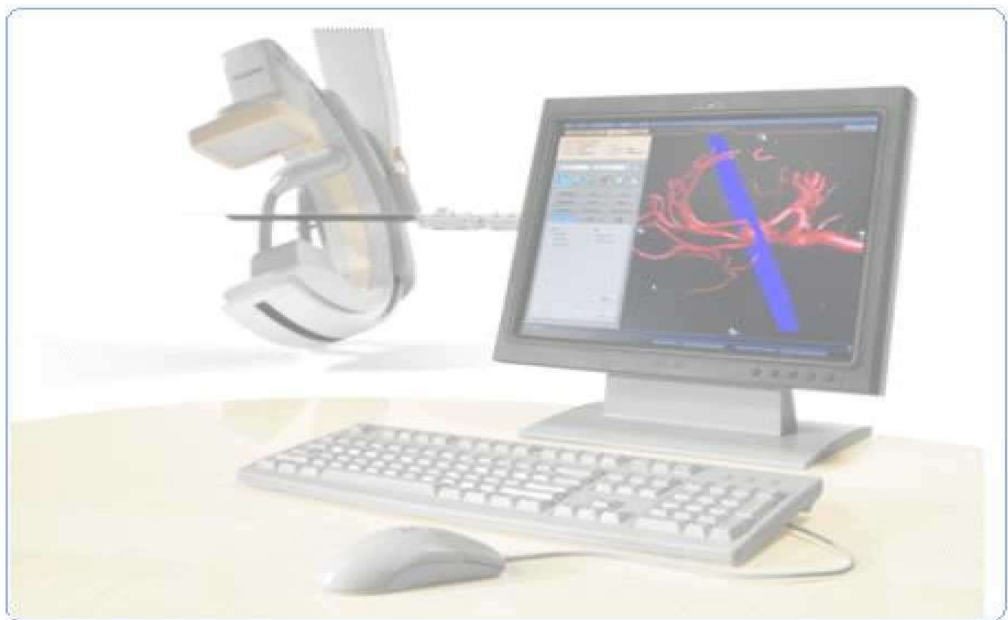


# DICOM Conformance Statement

## MR-CT Roadmap R1.5 On Interventional Workspot R1.8



*- This page is left intentionally empty -*

## **1. DICOM Conformance Statement Overview**

For information about this section, Refer to 1068450 DICOM Conformance Statement Interventional Workspot R1.8.

**2. Contents**

- 1. DICOM Conformance Statement Overview ..... 3
- 2. Contents ..... 4
- 3. Introduction..... 5
  - 3.1. Revision History.....5
  - 3.2. Audience.....5
  - 3.3. Remarks.....5
  - 3.4. Definitions, Terms and Abbreviations.....6
  - 3.5. References.....6
- 4. Networking..... 7
- 5. Media Interchange ..... 7
- 6. Support of Character Set ..... 7
- 7. Security ..... 7
- 8. Annexes of "MR-CT Roadmap R1.5 Application" ..... 8
  - 8.1. IOD Contents .....8
    - 8.1.1. Acceptance Criteria .....8
    - 8.1.2. Created SOP Instance .....8
      - 8.1.2.1. List of Created SOP Classes .....9

### 3. Introduction

This DICOM Conformance Statement annex is applicable to the MR-CT Roadmap R1.5 Application, later referred to as MR-CT Roadmap Application. In general, the MR-CT Roadmap Application is the user environment for viewing and analyzing MR, CT and XA images. It overlays real-time 2D fluoroscopy images and a 3D reconstruction of the vessel tree from a previous CT/MR scan.

#### 3.1. Revision History

The revision history provides dates and differences of the different releases.

**Table 1: Revision History**

Document Version	Date of Issue	Description of change
01	10-Feb-2023	First release for MR-CT Roadmap R1.5 on Interventional Workspot R1.8
02	27-Feb-2024	Second release for MR-CT Roadmap R1.5 on Interventional Workspot R1.8 <ul style="list-style-type: none"> <li>Updated support of DICOM attribute Station Name (0008,1010) under General Equipment Module for all the applicable created SOP Classes</li> </ul>
03	13-Aug-2025	Release for MR-CT Roadmap R1.5.10 as a part of Interventional Workspot R1.8.10

#### 3.2. Audience

This Conformance Statement is intended for:

- (Potential) customers
- System integrators of medical equipment
- Marketing staff interested in system functionality
- Software designers implementing DICOM interfaces

It is assumed that the reader is familiar with the DICOM standard.

#### 3.3. Remarks

The DICOM Conformance Statement is contained in chapter 4 through 8 and follows the contents and structuring requirements of DICOM PS 3.2.

This DICOM Conformance Statement by itself does not guarantee successful interoperability of Philips equipment with non-Philips equipment. The user (or user's agent) should be aware of the following issues:

- **Interoperability**  
Interoperability refers to the ability of application functions, distributed over two or more systems, to work successfully together. The integration of medical devices into an IT environment may require application functions that are not specified within the scope of DICOM. Consequently, using only the information provided by this Conformance Statement does not guarantee interoperability of Philips equipment with non-Philips equipment.  
It is the user's responsibility to analyze thoroughly the application requirements and to specify a solution that integrates Philips equipment with non-Philips equipment.
- **Validation**  
Philips equipment has been carefully tested to ensure that the actual implementation of the DICOM interface corresponds with this Conformance Statement.  
Where Philips equipment is linked to non-Philips equipment, the first step is to compare the relevant Conformance Statements. If the Conformance Statements indicate that successful information exchange should be possible, additional validation tests will be necessary to ensure the functionality, performance, accuracy and stability of image and image related data. It is the responsibility of the user (or user's agent) to specify the appropriate test suite and to carry out the additional validation tests.

- **New versions of the DICOM Standard**

The DICOM Standard will evolve in future to meet the user's growing requirements and to incorporate new features and technologies. Philips is actively involved in this evolution and plans to adapt its equipment to future versions of the DICOM Standard. In order to do so, Philips reserves the right to make changes to its products or to discontinue its delivery. The user should ensure that any non-Philips provider linking to Philips equipment also adapts to future versions of the DICOM Standard. If not, the incorporation of DICOM enhancements into Philips equipment may lead to loss of connectivity (in case of networking) and incompatibility (in case of media).

### 3.4. Definitions, Terms and Abbreviations

**Table 2: Definitions, Terms and Abbreviations**

Abbreviation/Term	Explanation
DICOM	Digital Imaging and Communications in Medicine
IOD	Information Object Definition
IW	Interventional Workspot
HSDP	HealthSuiteDigitalPlatform
NEMA	National Electrical Manufacturers Association
SOP	Service Object Pair
UID	Unique Identifier
VR	Value Representation
XA	X-Ray Angiography

### 3.5. References

[DICOM] Digital Imaging and Communications in Medicine, Parts 1 - 22 (NEMA PS 3.1- PS 3.22),  
 National Electrical Manufacturers Association  
 1300 North 17th Street  
 Suite 900  
 Arlington, Virginia 22209  
 Internet: <https://www.dicomstandard.org/current>

#### **4. Networking**

For information about this section, Refer to 1068450 DICOM Conformance Statement Interventional Workspot R1.8.

#### **5. Media Interchange**

For information about this section, Refer to 1068450 DICOM Conformance Statement Interventional Workspot R1.8.

#### **6. Support of Character Set**

For information about this section, Refer to 1068450 DICOM Conformance Statement Interventional Workspot R1.8.

#### **7. Security**

For information about this section, Refer to 1068450 DICOM Conformance Statement Interventional Workspot R1.8.

## 8. Annexes of "MR-CT Roadmap R1.5 Application"

### 8.1. IOD Contents

This section specifies each IOD accepted and / or created by MR-CT Roadmap R1.5 Application

- ACCEPTED The applicable IOD is accepted for storage in the repository of the hosting platform and supported for import in MR-CT Roadmap Application for viewing and analysis.
- CREATED The MR-CT Roadmap Application supports generation of derived data by using the applicable IOD and is able to store this data in the repository of the hosting platform.

**Table 3: List of Created SOP Classes**

IOD		Supported	
Name	UID	Accepted	Created
X-Ray Angiographic Image Storage SOP Class	1.2.840.10008.5.1.4.1.1.12.1	Yes	Yes
Secondary Capture Image Storage SOP Class	1.2.840.10008.5.1.4.1.1.7	No	Yes
Multiframe True Color Secondary Capture Image Storage SOP Class	1.2.840.10008.5.1.4.1.1.7.4	No	Yes
Raw Data Storage SOP Class	1.2.840.10008.5.1.4.1.1.66	No	Yes
CT Image Storage SOP Class	1.2.840.10008.5.1.4.1.1.2	Yes	No
MR Image Storage SOP Class	1.2.840.10008.5.1.4.1.1.4	Yes	No

#### 8.1.1. Acceptance Criteria

This section specifies the acceptance criteria applied by MR-CT Roadmap Application to which a dataset should adhere before it can be imported into the application. This can be criteria on the highest level (e.g. data from a certain manufacturer or system model) or certain DICOM attributes mandatory to be present into the dataset holding a specific value. In case one or more Philips private attributes are required, then a list of supported Philips system models will be mentioned.

**Table 4: Accepted System Models**

Manufacturer	Modality	System Model Name(s)
Philips	XA	Allura Azurion

**Table 5: Accepted Transfer Syntax per IOD**

For information about this Table, Refer to 1068450 DICOM Conformance Statement Interventional Workspot R1.8.

**Table 6: : Accepted Attribute Values**

Attribute Name	Attribute Number	Values/Comments
Not Applicable	Not Applicable	Not Applicable

#### 8.1.2. Created SOP Instance

This section specifies each IOD created by this application.

This section specifies each IOD created. It should specify the attribute name, tag, VR, and value. The value should specify the range and source (e.g. user input, Modality Worklist, automatically generated, etc.). For content items in templates, the range and source of the concept name and concept values should be specified. Whether the value is always present or not shall be specified.

Abbreviations used in the IOD tables for the column "Presence of Module" are:

- ALWAYS The module is always present
- CONDITIONAL The module is used under specified condition

Abbreviations used in the Module table for the column "Presence of Value" are:

- ALWAYS The attribute is always present with a value
- EMPTY The attribute is always present without any value (attribute sent zero length)
- VNAP The attribute is always present and its Value is Not Always Present (attribute sent zero length if no value is present)
- ANAP The attribute is present under specified condition – if present then it will always have a value

The abbreviations used in the Module table for the column "Source" are:

- AUTO The attribute value is generated automatically
- CONFIG The attribute value source is a configurable parameter
- COPY The attribute value source is another SOP instance
- FIXED The attribute value is hard-coded in the application
- IMPLICIT The attribute value source is a user-implicit setting
- MPPS The attribute value is the same as that use for Modality Performed Procedure Step
- MWL The attribute value source is a Modality Worklist
- USER The attribute value source is explicit user input

### 8.1.2.1. List of Created SOP Classes

**Table 7: List of Created SOP Classes**

SOP Class Name	SOP Class UID
X-Ray Angiographic Image Storage SOP Class	1.2.840.10008.5.1.4.1.1.12.1
Secondary Capture Image Storage SOP Class	1.2.840.10008.5.1.4.1.1.7
Multiframe True Color Secondary Capture Image Storage SOP Class	1.2.840.10008.5.1.4.1.1.7.4
Raw Data Storage SOP Class	1.2.840.10008.5.1.4.1.1.66

#### 8.1.2.1.1 X-Ray Angiographic Image Storage SOP Class

**Table 8: IOD of Created X-Ray Angiographic Image Storage SOP Class Instances**

Information Entity	Module	Presence Of Module
Patient	Patient Module	ALWAYS
Study	General Study Module	ALWAYS
	Patient Study Module	ALWAYS
Series	General Series Module	ALWAYS
Equipment	General Equipment Module	ALWAYS
Acquisition	General Acquisition Module	ALWAYS
Image	General Image Module	ALWAYS
	Image Pixel Module	ALWAYS
	Cine Module	CONDITIONAL (Not present for single frame XA images)
	Multi-Frame Module	CONDITIONAL (Not present for single frame XA images)
	Display Shutter Module	ALWAYS
	X-Ray Image Module	ALWAYS
	X-Ray Acquisition Module	ALWAYS

Information Entity	Module	Presence Of Module
	X-Ray Table Module	ALWAYS
	XA Positioner Module	ALWAYS
	DX Detector Module	ALWAYS
	VOI LUT Module	ALWAYS
	SOP Common Module	ALWAYS

**Table 9: Patient Module**

Attribute Name	TAG	VR	Value	Presence of Value	Source	Comments
Patient's Name	0010,0010	PN		VNAP	COPY	
Patient ID	0010,0020	LO		VNAP	COPY	
Patient's Birth Date	0010,0030	DA		VNAP	COPY	
Patient's Sex	0010,0040	CS		VNAP	COPY	
Other Patient IDs	0010,1000	LO		ANAP	COPY	

**Table 10: General Study Module**

Attribute Name	TAG	VR	Value	Presence of Value	Source	Comments
Study Date	0008,0020	DA		ALWAYS	COPY	
Study Time	0008,0030	TM		ALWAYS	COPY	
Accession Number	0008,0050	SH		VNAP	COPY	
Referring Physician's Name	0008,0090	PN		VNAP	COPY	
Study Instance UID	0020,000D	UI		ALWAYS	COPY	
Study ID	0020,0010	SH		VNAP	COPY	

**Table 11: Patient Study Module**

Attribute Name	TAG	VR	Value	Presence of Value	Source	Comments
Patient's Weight	0010,1030	DS		VNAP	COPY	

**Table 12: General Series Module**

Attribute Name	TAG	VR	Value	Presence of Value	Source	Comments
Series Date	0008,0021	DA		ALWAYS	AUTO	
Series Time	0008,0031	TM		ALWAYS	AUTO	
Modality	0008,0060	CS	XA	ALWAYS	FIXED	
Series Description	0008,103E	LO		ALWAYS	COPY	
Performing Physician's Name	0008,1050	PN		ANAP	COPY	
Related Series Sequence	0008,1250	SQ		VNAP	AUTO	
>Study Instance UID	0020,000D	UI		ALWAYS	AUTO	
>Series Instance UID	0020,000E	UI		ALWAYS	AUTO	
>Purpose of Reference Code Sequence	0040,A170	SQ		VNAP	AUTO	
Series Instance UID	0020,000E	UI		ALWAYS	AUTO	
Series Number	0020,0011	IS		ALWAYS	AUTO	

Attribute Name	TAG	VR	Value	Presence of Value	Source	Comments
Performed Procedure Step Start Date	0040,0244	DA		ANAP	COPY	
Performed Procedure Step Start Time	0040,0245	TM		ANAP	COPY	
Performed Procedure Step ID	0040,0253	SH		ANAP	COPY	
Request Attributes Sequence	0040,0275	SQ		ANAP	COPY	
>Requested Procedure ID	0040,1001	SH		ANAP	COPY	

**Table 13: General Equipment Module**

Attribute Name	TAG	VR	Value	Presence of Value	Source	Comments
Manufacturer	0008,0070	LO	Philips	ALWAYS	FIXED	
Institution Name	0008,0080	LO		VNAP	CONFIG	Configured Hospital Name
Manufacturer's Model Name	0008,1090	LO	Interventional Workspot	ALWAYS	FIXED	
Station Name	0008,1010	SH		ALWAYS	AUTO	Windows computer name
Device Serial Number	0018,1000	LO		ALWAYS	AUTO	Mac address of Hospital Network
Software Versions	0018,1020	LO	1.8.x.y	ALWAYS	AUTO	Where "x.y" is the detailed application SW version.

**Table 14: General Acquisition Module**

Attribute Name	TAG	VR	Value	Presence of Value	Source	Comments
Acquisition Date	0008,0022	DA		ALWAYS	COPY	
Acquisition Time	0008,0032	TM		ALWAYS	COPY	

**Table 15: General Image Module**

Attribute Name	TAG	VR	Value	Presence of Value	Source	Comments
Image Type	0008,0008	CS		ALWAYS	COPY	
Content Date	0008,0023	DA		VNAP	COPY	
Content Time	0008,0033	TM		VNAP	COPY	
Instance Number	0020,0013	IS		ALWAYS	AUTO	
Patient Orientation	0020,0020	CS		ANAP	COPY	
Lossy Image Compression	0028,2110	CS		ANAP	COPY	
Icon Image Sequence	0088,0200	SQ		ALWAYS	AUTO	
>Samples per Pixel	0028,0002	US	1	ALWAYS	AUTO	
>Photometric Interpretation	0028,0004	CS	MONOCHROME2	ALWAYS	AUTO	
>Rows	0028,0010	US		ALWAYS	AUTO	
>Columns	0028,0011	US		ALWAYS	AUTO	

Attribute Name	TAG	VR	Value	Presence of Value	Source	Comments
>Bits Allocated	0028,0100	US	8	ALWAYS	AUTO	
>Bits Stored	0028,0101	US	8	ALWAYS	AUTO	
>High Bit	0028,0102	US	7	ALWAYS	AUTO	
>Pixel Representation	0028,0103	US	0	ALWAYS	AUTO	
>Pixel Data	7FE0,0010	OW/OB		ALWAYS	AUTO	

**Table 16: Image Pixel Module**

Attribute Name	TAG	VR	Value	Presence of Value	Source	Comments
Samples per Pixel	0028,0002	US	1	ALWAYS	COPY	
Photometric Interpretation	0028,0004	CS	MONOCHROME2	ALWAYS	COPY	
Rows	0028,0010	US		ALWAYS	COPY	
Columns	0028,0011	US		ALWAYS	COPY	
Bits Allocated	0028,0100	US	16	ALWAYS	COPY	
Bits Stored	0028,0101	US	16	ALWAYS	COPY	
High Bit	0028,0102	US	15	ALWAYS	COPY	
Pixel Representation	0028,0103	US	0	ALWAYS	COPY	
Pixel Data	7FE0,0010	OB/OW		ALWAYS	COPY	

**Table 17: Cine Module**

Attribute Name	TAG	VR	Value	Presence of Value	Source	Comments
Cine Rate	0018,0040	IS		ANAP	COPY	Not present in single frame XA images
Frame Time	0018,1063	DS		ANAP	COPY	Not present in single frame XA images

**Table 18: Multi-Frame Module**

Attribute Name	TAG	VR	Value	Presence of Value	Source	Comments
Number of Frames	0028,0008	IS		ANAP	COPY	Not present in single frame XA images
Frame Increment Pointer	0028,0009	AT		ANAP	COPY	Not present in single frame XA images

**Table 19: Display Shutter Module**

Attribute Name	TAG	VR	Value	Presence of Value	Source	Comments
Shutter Shape	0018,1600	CS		ALWAYS	COPY	
Shutter Left Vertical Edge	0018,1602	IS		ALWAYS	COPY	
Shutter Right Vertical Edge	0018,1604	IS		ALWAYS	COPY	
Shutter Upper Horizontal Edge	0018,1606	IS		ALWAYS	COPY	
Shutter Lower Horizontal Edge	0018,1608	IS		ALWAYS	COPY	

**Table 20: X-Ray Image Module**

Attribute Name	TAG	VR	Value	Presence of Value	Source	Comments
Image Type	0008,0008	CS		ALWAYS	COPY	
Samples per Pixel	0028,0002	US	1	ALWAYS	COPY	
Photometric Interpretation	0028,0004	CS		ALWAYS	COPY	
Frame Increment Pointer	0028,0009	AT	00181063	ANAP	COPY	Not present in single frame XA images
Bits Allocated	0028,0100	US	16	ALWAYS	COPY	
Bits Stored	0028,0101	US	16	ALWAYS	COPY	
High Bit	0028,0102	US	15	ALWAYS	COPY	
Pixel Representation	0028,0103	US	0	ALWAYS	COPY	
Pixel Intensity Relationship	0028,1040	CS	LIN	ALWAYS	COPY	
Lossy Image Compression	0028,2110	CS	00	ALWAYS	COPY	

**Table 21: X-Ray Acquisition Module**

Attribute Name	TAG	VR	Value	Presence of Value	Source	Comments
KVP	0018,0060	DS		VNAP	COPY	
Exposure	0018,1152	IS		VNAP	COPY	
Radiation Setting	0018,1155	CS		ALWAYS	COPY	
Imager Pixel Spacing	0018,1164	DS		ANAP	COPY	
Pixel Spacing	0028,0030	DS		ALWAYS	COPY	

**Table 22: X-Ray Table Module**

Attribute Name	TAG	VR	Value	Presence of Value	Source	Comments
Table Motion	0018,1134	CS		VNAP	COPY	
Table Angle	0018,1138	DS		ANAP	COPY	

**Table 23: XA Positioner Module**

Attribute Name	TAG	VR	Value	Presence of Value	Source	Comments
Distance Source to Detector	0018,1110	DS		ANAP	COPY	
Distance Source to Patient	0018,1111	DS		ANAP	COPY	
Positioner Motion	0018,1500	CS		VNAP	COPY	
Positioner Primary Angle	0018,1510	DS		ALWAYS	AUTO	AUTO: Derived from modality supplied information
Positioner Secondary Angle	0018,1511	DS		ALWAYS	AUTO	AUTO: Derived from modality supplied information
Positioner Primary Angle Increment	0018,1520	DS		ANAP	AUTO	AUTO: Derived from modality supplied information

Attribute Name	TAG	VR	Value	Presence of Value	Source	Comments
Positioner Secondary Angle Increment	0018,1521	DS		ANAP	AUTO	AUTO: Derived from modality supplied information

**Table 24: DX Detector Module**

Attribute Name	TAG	VR	Value	Presence of Value	Source	Comments
Imager Pixel Spacing	0018,1164	DS		ALWAYS	COPY	
Pixel Spacing	0028,0030	DS		ALWAYS	COPY	

**Table 25: VOI LUT Module**

Attribute Name	TAG	VR	Value	Presence of Value	Source	Comments
Window Center	0028,1050	DS		ALWAYS	COPY	
Window Width	0028,1051	DS		ALWAYS	COPY	

**Table 26: SOP Common Module**

Attribute Name	TAG	VR	Value	Presence of Value	Source	Comments
Specific Character Set	0008,0005	CS		ANAP	AUTO	As supported by hosting platform
Instance Creation Date	0008,0012	DA		ALWAYS	AUTO	
Instance Creation Time	0008,0013	TM		ALWAYS	AUTO	
SOP Class UID	0008,0016	UI	1.2.840.10008.5.1.4.1.1.12.1	ALWAYS	FIXED	
SOP Instance UID	0008,0018	UI		ALWAYS	AUTO	
Instance Number	0020,0013	IS		ALWAYS	AUTO	

**8.1.2.1.2 Secondary Capture Image Storage SOP Class**

**Table 27: IOD of Created Secondary Capture Image Storage SOP Class Instances**

Information Entity	Module	Presence Of Module
Patient	Patient Module	ALWAYS
Study	General Study Module	ALWAYS
	Patient Study Module	ALWAYS
Series	General Series Module	ALWAYS
Equipment	General Equipment Module	ALWAYS
	SC Equipment Module	ALWAYS
Image	General Image Module	ALWAYS
	Image Pixel Module	ALWAYS
	SOP Common Module	ALWAYS

**Table 28: Patient Module**

Attribute Name	TAG	VR	Value	Presence of Value	Source	Comments
Patient's Name	0010,0010	PN		VNAP	COPY	
Patient ID	0010,0020	LO		VNAP	COPY	
Patient's Birth Date	0010,0030	DA		VNAP	COPY	
Patient's Sex	0010,0040	CS		VNAP	COPY	

Attribute Name	TAG	VR	Value	Presence of Value	Source	Comments
Issuer of Patient ID	0010,0021	LO		ANAP	COPY	
Other Patient IDs	0010,1000	LO		ANAP	COPY	

**Table 29: General Study Module**

Attribute Name	TAG	VR	Value	Presence of Value	Source	Comments
Study Date	0008,0020	DA		ALWAYS	COPY	
Study Time	0008,0030	TM		ALWAYS	COPY	
Accession Number	0008,0050	SH		VNAP	COPY	
Referring Physician's Name	0008,0090	PN		VNAP	COPY	
Study Instance UID	0020,000D	UI		ALWAYS	COPY	
Study ID	0020,0010	SH		VNAP	COPY	

**Table 30: Patient Study Module**

Attribute Name	TAG	VR	Value	Presence of Value	Source	Comments
Patient's Weight	0010,1030	DS		VNAP	COPY	

**Table 31: General Series Module**

Attribute Name	TAG	VR	Value	Presence of Value	Source	Comments
Series Date	0008,0021	DA		ALWAYS	AUTO	
Series Time	0008,0031	TM		ALWAYS	AUTO	
Modality	0008,0060	CS	XA	ALWAYS	FIXED	
Series Instance UID	0020,000E	UI		ALWAYS	AUTO	
Series Number	0020,0011	IS		ALWAYS	AUTO	
Related Series Sequence	0008,1250	SQ		VNAP	AUTO	
>Study Instance UID	0020,000D	UI		ALWAYS	AUTO	
>Series Instance UID	0020,000E	UI		ALWAYS	AUTO	
>Purpose of Reference Code Sequence	0040,A170	SQ		VNAP	AUTO	
Performed Procedure Step Start Date	0040,0244	DA		ANAP	COPY	
Performed Procedure Step Start Time	0040,0245	TM		ANAP	COPY	
Performed Procedure Step ID	0040,0253	SH		ANAP	COPY	
Request Attributes Sequence	0040,0275	SQ		ANAP	COPY	
>Requested Procedure ID	0040,1001	SH		ANAP	COPY	

**Table 32: General Equipment Module**

Attribute Name	TAG	VR	Value	Presence of Value	Source	Comments
Manufacturer	0008,0070	LO	Philips	ALWAYS	FIXED	

Attribute Name	TAG	VR	Value	Presence of Value	Source	Comments
Institution Name	0008,0080	LO		VNAP	CONFIG	Configured Hospital Name
Manufacturer's Model Name	0008,1090	LO	Interventional Workspot	ALWAYS	FIXED	
Station Name	0008,1010	SH		ALWAYS	AUTO	Windows computer name
Software Versions	0018,1020	LO	1.8.x	ALWAYS	FIXED	Where "x" is the detailed application SW version.

**Table 33: SC Equipment Module**

Attribute Name	TAG	VR	Value	Presence of Value	Source	Comments
Modality	0008,0060	CS	XA	ALWAYS	FIXED	
Conversion Type	0008,0064	CS	WSD	ALWAYS	FIXED	

**Table 34: General Image Module**

Attribute Name	TAG	VR	Value	Presence of Value	Source	Comments
Instance Number	0020,0013	IS		ALWAYS	AUTO	
Patient Orientation	0020,0020	CS		VNAP	AUTO	

**Table 35: Image Pixel Module**

Attribute Name	TAG	VR	Value	Presence of Value	Source	Comments
Samples per Pixel	0028,0002	US	3	ALWAYS	AUTO	
Photometric Interpretation	0028,0004	CS	RGB	ALWAYS	AUTO	
Planar Configuration	0028,0006	US	0	VNAP	AUTO	
Rows	0028,0010	US		ALWAYS	AUTO	
Columns	0028,0011	US		ALWAYS	AUTO	
Bits Allocated	0028,0100	US	8	ALWAYS	AUTO	
Bits Stored	0028,0101	US	8	ALWAYS	AUTO	
High Bit	0028,0102	US	7	ALWAYS	AUTO	
Pixel Representation	0028,0103	US	0	ALWAYS	AUTO	
Pixel Data	7FE0,0010	OW/OB		ALWAYS	AUTO	

**Table 36: SOP Common Module**

Attribute Name	TAG	VR	Value	Presence of Value	Source	Comments
Specific Character Set	0008,0005	CS		ANAP	AUTO	As supported by hosting platform
SOP Class UID	0008,0016	UI	1.2.840.10008.5.1.4.1.1.7	ALWAYS	FIXED	
SOP Instance UID	0008,0018	UI		ALWAYS	AUTO	
Instance Creation Date	0008,0012	DA		ALWAYS	AUTO	

Attribute Name	TAG	VR	Value	Presence of Value	Source	Comments
Instance Creation Time	0008,0013	TM		ALWAYS	AUTO	
Instance Number	0020,0013	IS		ALWAYS	AUTO	

**8.1.2.1.3 Multi-frame True Color Secondary Capture Image Storage SOP Class**

**Table 37: IOD of Created Multi-frame True Color Secondary Capture Image Storage SOP Class Instances**

Information Entity	Module	Presence Of Module
Patient	Patient Module	ALWAYS
Study	General Study Module	ALWAYS
	Patient Study Module	ALWAYS
Series	General Series Module	ALWAYS
Frame of Reference	Frame of Reference Module	CONDITIONAL
Equipment	General Equipment Module	ALWAYS
	SC Equipment Module	ALWAYS
Image	General Image Module	ALWAYS
	Image Pixel Module	ALWAYS
	Cine Module	ALWAYS
	Multi-Frame Module	ALWAYS
	Multi-Frame Functional Groups Module	ALWAYS
	SC Multi-frame Image Module	ALWAYS
	SOP Common Module	ALWAYS

**Table 38: Patient Module**

Attribute Name	TAG	VR	Value	Presence of Value	Source	Comments
Patient's Name	0010,0010	PN		VNAP	COPY	
Patient ID	0010,0020	LO		VNAP	COPY	
Patient's Birth Date	0010,0030	DA		VNAP	COPY	
Patient's Sex	0010,0040	CS		VNAP	COPY	
Issuer of Patient ID	0010,0021	LO		ANAP	COPY	
Other Patient IDs	0010,1000	LO		ANAP	COPY	

**Table 39: General Study Module**

Attribute Name	TAG	VR	Value	Presence of Value	Source	Comments
Study Date	0008,0020	DA		ALWAYS	COPY	
Study Time	0008,0030	TM		ALWAYS	COPY	
Accession Number	0008,0050	SH		VNAP	COPY	
Referring Physician's Name	0008,0090	PN		VNAP	COPY	
Study Instance UID	0020,000D	UI		ALWAYS	COPY	
Study ID	0020,0010	SH		VNAP	COPY	

**Table 40: Patient Study Module**

Attribute Name	TAG	VR	Value	Presence of Value	Source	Comments
Patient's Weight	0010,1030	DS		VNAP	COPY	

**Table 41: General Series Module**

Attribute Name	TAG	VR	Value	Presence of Value	Source	Comments
Series Date	0008,0021	DA		ALWAYS	COPY	
Series Time	0008,0031	TM		ALWAYS	COPY	
Modality	0008,0060	CS	XA	ALWAYS	FIXED	
Related Series Sequence	0008,1250	SQ		VNAP	AUTO	
>Study Instance UID	0020,000D	UI		ALWAYS	AUTO	
>Series Instance UID	0020,000E	UI		ALWAYS	AUTO	
>Purpose of Reference Code Sequence	0040,A170	SQ		VNAP	AUTO	
Series Instance UID	0020,000E	UI		ALWAYS	AUTO	
Series Number	0020,0011	IS		ALWAYS	AUTO	
Performed Procedure Step Start Date	0040,0244	DA		ANAP	COPY	
Performed Procedure Step Start Time	0040,0245	TM		ANAP	COPY	
Performed Procedure Step ID	0040,0253	SH		ANAP	COPY	
Request Attributes Sequence	0040,0275	SQ		ANAP	COPY	
>Requested Procedure ID	0040,1001	SH		ANAP	COPY	

**Table 42: Frame of Reference Module**

Attribute Name	TAG	VR	Value	Presence of Value	Source	Comments
Frame of Reference UID	0020,0052	UI		ALWAYS	COPY	
Position Reference Indicator	0020,1040	LO		VNAP	COPY	

**Table 43: General Equipment Module**

Attribute Name	TAG	VR	Value	Presence of Value	Source	Comments
Manufacturer	0008,0070	LO	Philips	ALWAYS	FIXED	
Institution Name	0008,0080	LO		VNAP	CONFIG	Configured Hospital Name
Manufacturer's Model Name	0008,1090	LO	Interventional Workspot	ALWAYS	FIXED	
Station Name	0008,1010	SH		ANAP	AUTO	Windows computer name
Software Versions	0018,1020	LO	1.8.x	ALWAYS	AUTO	Where "x" is the detailed application SW version.

**Table 44: SC Equipment Module**

Attribute Name	TAG	VR	Value	Presence of Value	Source	Comments
Modality	0008,0060	CS	XA	ALWAYS	FIXED	

Attribute Name	TAG	VR	Value	Presence of Value	Source	Comments
Conversion Type	0008,0064	CS	WSD	ALWAYS	FIXED	

**Table 45: General Image Module**

Attribute Name	TAG	VR	Value	Presence of Value	Source	Comments
Instance Number	0020,0013	IS		VNAP	AUTO	
Patient Orientation	0020,0020	CS		VNAP	AUTO	
Burned in Annotation	0028,0301	CS		ANAP	AUTO	

**Table 46: Image Pixel Module**

Attribute Name	TAG	VR	Value	Presence of Value	Source	Comments
Samples per Pixel	0028,0002	US	3	ALWAYS	AUTO	
Photometric Interpretation	0028,0004	CS	RGB	ALWAYS	AUTO	
Planar Configuration	0028,0006	US	0	ALWAYS	AUTO	
Rows	0028,0010	US		ALWAYS	AUTO	
Columns	0028,0011	US		ALWAYS	AUTO	
Bits Allocated	0028,0100	US	8	ALWAYS	AUTO	
Bits Stored	0028,0101	US	8	ALWAYS	AUTO	
High Bit	0028,0102	US	7	ALWAYS	AUTO	
Pixel Representation	0028,0103	US	0	ALWAYS	AUTO	
Pixel Data	7FE0,0010	OW/OB		ALWAYS	AUTO	

**Table 47: Cine Module**

Attribute Name	TAG	VR	Value	Presence of Value	Source	Comments
Frame Time	0018,1063	DS		ALWAYS	COPY	

**Table 48: Multi-Frame Module**

Attribute Name	TAG	VR	Value	Presence of Value	Source	Comments
Number of Frames	0028,0008	IS		ALWAYS	COPY	
Frame Increment Pointer	0028,0009	AT	00181063	ALWAYS	COPY	

**Table 49: Multi-Frame Functional Groups Module**

Attribute Name	TAG	VR	Value	Presence of Value	Source	Comments
Instance Number	0020,0013	IS		ALWAYS	AUTO	
Number of Frames	0028,0008	IS		ALWAYS	AUTO	

**Table 50: SC Multi-Frame Image Module**

Attribute Name	TAG	VR	Value	Presence of Value	Source	Comments
Frame Increment Pointer	0028,0009	AT	00181063	ALWAYS	AUTO	
Burned In Annotation	0028,0301	CS	YES	ALWAYS	AUTO	

**Table 51: SOP Common Module**

Attribute Name	TAG	VR	Value	Presence of Value	Source	Comments
Specific Character Set	0008,0005	CS		ANAP	AUTO	As supported by hosting platform
SOP Class UID	0008,0016	UI	1.2.840.10008.5.1.4.1.1.7.4	ALWAYS	FIXED	
SOP Instance UID	0008,0018	UI		ALWAYS	AUTO	
Instance Creation Date	0008,0012	DA		ALWAYS	AUTO	
Instance Creation Time	0008,0013	TM		ALWAYS	AUTO	
Instance Number	0020,0013	IS		ALWAYS	AUTO	

**8.1.2.1.4 Raw Data Storage SOP Class**

**Table 52: IOD of Created Raw Data Storage SOP Class Instances**

Information Entity	Module	Presence Of Module
Patient	Patient Module	ALWAYS
Study	General Study Module	ALWAYS
	Patient Study Module	ALWAYS
Series	General Series Module	ALWAYS
Frame of reference	Frame of reference Module	ALWAYS
Equipment	General Equipment Module	ALWAYS
Image	Acquisition Context Module	ALWAYS
	Raw Data Module	ALWAYS
	SOP Common Module	ALWAYS

**Table 53: Patient Module**

Attribute Name	TAG	VR	Value	Presence of Value	Source	Comments
Patient's Name	0010,0010	PN		VNAP	COPY	
Patient ID	0010,0020	LO		VNAP	COPY	
Patient's Birth Date	0010,0030	DA		VNAP	COPY	
Patient's Sex	0010,0040	CS		VNAP	COPY	
Other Patient IDs	0010,1000	LO		ANAP	COPY	

**Table 54: General Study Module**

Attribute Name	TAG	VR	Value	Presence of Value	Source	Comments
Study Date	0008,0020	DA		ALWAYS	COPY	
Study Time	0008,0030	TM		ALWAYS	COPY	
Accession Number	0008,0050	SH		VNAP	COPY	
Referring Physician's Name	0008,0090	PN		VNAP	COPY	
Study Instance UID	0020,000D	UI		ALWAYS	COPY	
Study ID	0020,0010	SH		VNAP	COPY	

**Table 55: Patient Study Module**

Attribute Name	TAG	VR	Value	Presence of Value	Source	Comments
Patient's Weight	0010,1030	DS		VNAP	COPY	

**Table 56: General Series Module**

Attribute Name	TAG	VR	Value	Presence of Value	Source	Comments
Series Date	0008,0021	DA		ALWAYS	AUTO	
Series Description	0008,103E	LO		ANAP	COPY	
Series Time	0008,0031	TM		ALWAYS	AUTO	
Modality	0008,0060	CS	XA	ALWAYS	FIXED	
Series Instance UID	0020,000E	UI		ALWAYS	AUTO	
Series Number	0020,0011	IS		ALWAYS	AUTO	
Performing Physician Name	0008,1050	PN		ANAP	COPY	
Related Series Sequence	0008,1250	SQ		VNAP	COPY	
>Study Instance UID	0020,000D	UI		ALWAYS	AUTO	
>Series Instance UID	0020,000E	UI		ALWAYS	COPY	
>Purpose of Reference Code Sequence	0040,A170	SQ		VNAP	AUTO	
Laterality	0020,0060	CS		ANAP	AUTO	
Performed Procedure Step Start Date	0040,0244	DA		ANAP	COPY	
Performed Procedure Step Start Time	0040,0245	TM		ANAP	COPY	
Performed Procedure Step ID	0040,0253	SH		ANAP	COPY	
Request Attributes Sequence	0040,0275	SQ		ANAP	COPY	
>Requested Procedure ID	0040,1001	SH		ANAP	COPY	

**Table 57: Frame of Reference Module**

Attribute Name	TAG	VR	Value	Presence of Value	Source	Comments
Frame of Reference UID	0020,0052	UI		ALWAYS	COPY	
Position Reference Indicator	0020,1040	LO		VNAP	COPY	

**Table 58: General Equipment Module**

Attribute Name	TAG	VR	Value	Presence of Value	Source	Comments
Manufacturer	0008,0070	LO	Philips	ALWAYS	FIXED	
Institution Name	0008,0080	LO		VNAP	CONFIG	Configured Hospital Name
Manufacturer's Model Name	0008,1090	LO	Interventional Workspot	ANAP	FIXED	

Attribute Name	TAG	VR	Value	Presence of Value	Source	Comments
Station Name	0008,1010	SH		ALWAYS	AUTO	Windows computer name
Device Serial Number	0018,1000	LO		ANAP	AUTO	Mac address of Hospital NIC
Software Versions	0018,1020	LO	1.8.x.y	ALWAYS	AUTO	Where “x.y” is the detailed application SW version.

**Table 59: Acquisition Context Module**

Attribute Name	TAG	VR	Value	Presence of Value	Source	Comments
Acquisition Context Sequence	0040,0555	SQ		VNAP	COPY	

**Table 60: Raw Data Module**

Attribute Name	TAG	VR	Value	Presence of Value	Source	Comments
Content Date	0008,0023	DA		ALWAYS	AUTO	
Content Time	0008,0033	TM		ALWAYS	AUTO	
Instance Number	0020,0013	IS		ANAP	AUTO	
Creator Version UID	0008,9123	UI		ALWAYS	AUTO	

**Table 61: SOP Common Module**

Attribute Name	TAG	VR	Value	Presence of Value	Source	Comments
Specific Character Set	0008,0005	CS		ANAP	AUTO	As supported by hosting platform
SOP Class UID	0008,0016	UI	1.2.840.10008.5.1.4.1.1.66	ALWAYS	FIXED	
SOP Instance UID	0008,0018	UI		ALWAYS	AUTO	
Instance Creation Date	0008,0012	DA		VNAP	AUTO	
Instance Creation Time	0008,0013	TM		VNAP	AUTO	
Instance Number	0020,0013	IS		ALWAYS	AUTO	
Original Specialized SOP Class UID	0008,001B	UI		VNAP	AUTO	

*- This part of the page is left intentionally empty -*

**Issued by:**

Philips Medical Systems Nederland B.V., a Philips Healthcare company  
P.O. Box 10.000  
5680 DA Best  
The Netherlands

Internet: <https://www.philips.com/DICOM>

Doc Id: 1068579

Date: 13-Aug-2025

